



Drill the panel compensator(s) with a 3mm drill bit through the pre-drilled 4.5mm hole on the compensator located on the inside face (inside of the shower area).



Using the screws supplied securely fix the panel(s) to the wall compensator(s) and conceal using the supplied chrome cover caps .



Silicone joint between floor / shower tray of “**PANEL E**”. Allow suitable cure time for silicone (this may be 24 hours depending on the variety use). **FOLLOW THE MANUFACTURERS GUIDELINES WHEN USING SILICONE SEALANT.**

Contour Showers, Siddorn Street, Winsford, Cheshire CW7 2BA
Telephone: 01606 592586 Fax: 01606 861260
Email: sales@contour-showers.co.uk
Website: www.contour-showers.co.uk



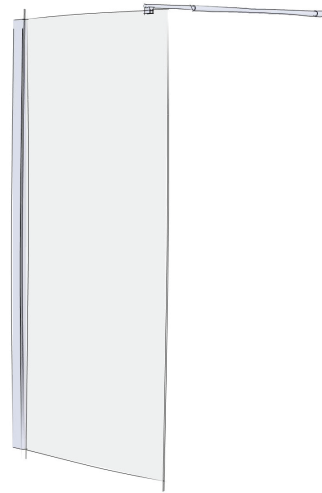
Opulence

Glass Screen Fitting Instructions



Glass Screen Options

GD53
GLASS SCREEN
Left hand panel
illustrated



Size	Adjustment	Reference
700mm	645-690mm	GD53-70
800mm	745-790mm	GD53-80
900mm	845-890mm	GD53-90
1000mm	945-990mm	GD53-10
1200mm	1145-1190mm	GD53-12

Walk-In Glass Screen Options

GD54
WALK-IN GLASS SCREENS
Left hand illustrated



Read before installation:

PLEASE READ ALL INSTRUCTIONS CAREFULLY & LEAVE WITH THE END USER.
INSTRUCTIONS ARE PREPARED TO HELP WITH THE ASSEMBLY & INSTALLATION OF HALF HEIGHT SHOWER DOORS TO SUIT A CORNER OR INLINE / ALCOVE SETTING.
CAREFULLY UNPACK THE PRODUCT. ENSURE YOU DO NOT ACCIDENTALLY DISPOSE OF ANY PARTS.
CHECK THAT THE SHOWER AREA / SHOWER TRAY WHERE THE SCREENS ARE TO BE INSTALLED IS LEVEL.
ALL SEALS ARE PRE-APPLIED AND SHOULD NOT BE REMOVED DURING INSTALLATION
PROTECT SHOWER TRAY SURFACES AND COVER ANY WASTES TO PREVENT LOSS OF SMALL ITEMS & TO PREVENT DEBRIS ENTERING THE PIPEWORK.
USE THE OUTER CARTON TO PROTECT THE FLOOR AND / OR WALL DURING ASSEMBLY IF NECESSARY.
ALLOW SUITABLE CURING TIME FOR SILICONE SEALANT. THIS COULD BE 24 HOURS DEPENDING UPON THE VARIETY USED.
IN THE CASE OF ANY DIFFICULTIES BEING ENCOUNTERED, PLEASE DO NOT HESITATE TO CONTACT OUR TECHNICAL DEPARTMENT ON 0845 402 9924 .
DUE TO THE NATURE OF ALL GLASS SHOWER SCREENS, WE CANNOT GUARANTEE THEY ARE 100% WATERTIGHT.
WE DO NOT APPROVE THE USE OF POWER SHOWERS WITH EASY ACCESS SHOWER SCREENS AND SHOWER TRAYS.



EASY CLEAN GLASS

Opulence glass shower enclosures are coated with an Easy Clean coating. The coating is an effective protection for easy to clean glass.

To optimize the durability of the Easy Clean protection, we recommend the following:

- Regularly rinse off the water & soap deposits by drying the surface with a squeegee or cloth if necessary.
- Clean the glass panels weekly (depending on the use & the hardness of the water).
- **Clean glass with warm soapy water or water containing a small amount of washing up liquid.** Rinse thoroughly & wipe with a soft, non-abrasive cloth.

DO NOT USE abrasive products, strong or concentrated acids, alkalis, chlorine or other abrasive cleaning products such as household bleach, disinfectant, bathroom limescale remover / mousse as they may discolour or damage the coating and void the warranty.

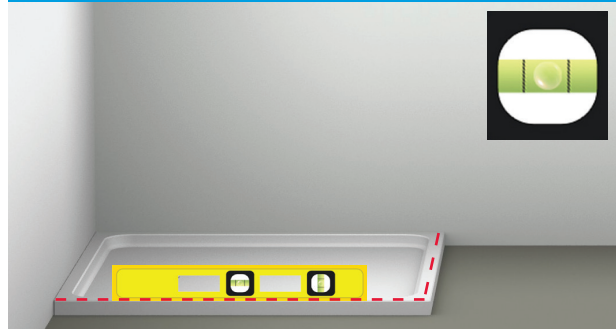


Technical Helpline: 0845 402 9924

Revision 2

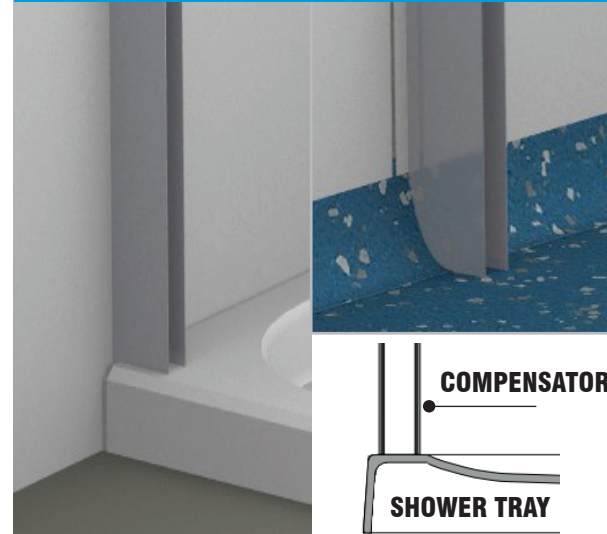
from
CONTOUR
built-in independence

1: CHECK THE LEVEL!



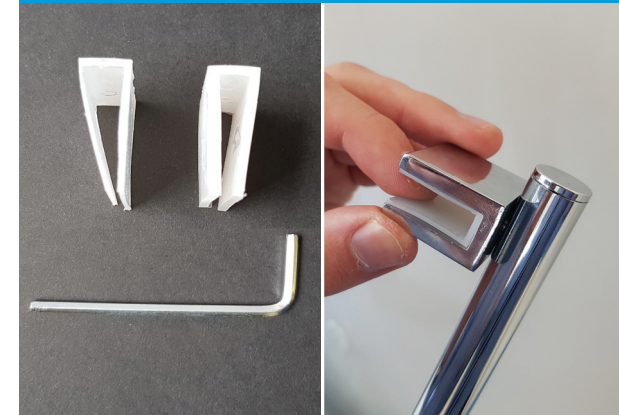
Before you start the installation, **ENSURE** that the shower area / shower tray / wetfloor former area where the screen(s) are to fitted is level, from side to side and front to back, using a spirit level.

2: COMPENSATOR STYLES



Place compensator against the wall ensuring that it rests on the flat area of the shower tray / wetfloor former.

7: TELESCOPIC TIE BAR



Fit the protective 'U' shaped spacer supplied in the tie bar kit into the tie bars 'U' channel as shown above right.

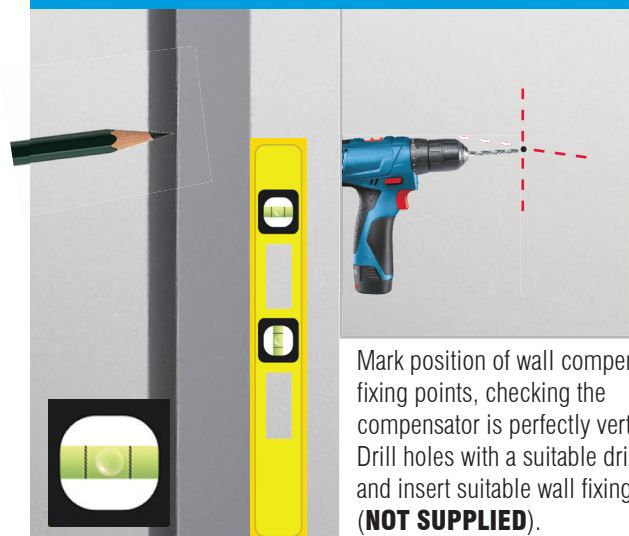
8: LOCATE TIE BAR



Tip: you do not need to cut the tie bar as it is telescopic.

Clip the tie bar onto 'panel E' (located on the long edge of the shower as shown in step 5). Ensure it is level using a spirit level. Mark fixing point onto the wall around the wall lug. Unscrew the wall lug from the tie bar with an allen key and use it to mark the centre point for the wall fixing. Drill a hole with a suitable drill bit and insert suitable wall fixings. (**NOT SUPPLIED**).

3: POSITION COMPENSATOR



Mark position of wall compensator fixing points, checking the compensator is perfectly vertical. Drill holes with a suitable drill bit and insert suitable wall fixings. (**NOT SUPPLIED**).

4: FIX COMPENSATOR



Run a bead of clear silicone bathroom sealant down the narrow face, for the full length of the outer compensator and then screw to the wall using suitable screws (**NOT SUPPLIED**). Wipe **ANY** excess silicone from compensator/wall joint.

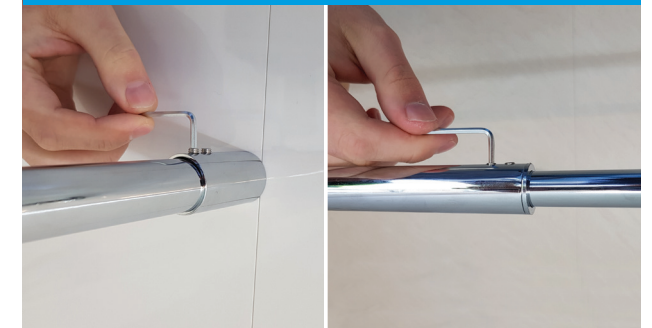
FOLLOW THE MANUFACTURERS GUIDELINES WHEN USING SILICONE SEALANT.

9: FIX TIE BAR



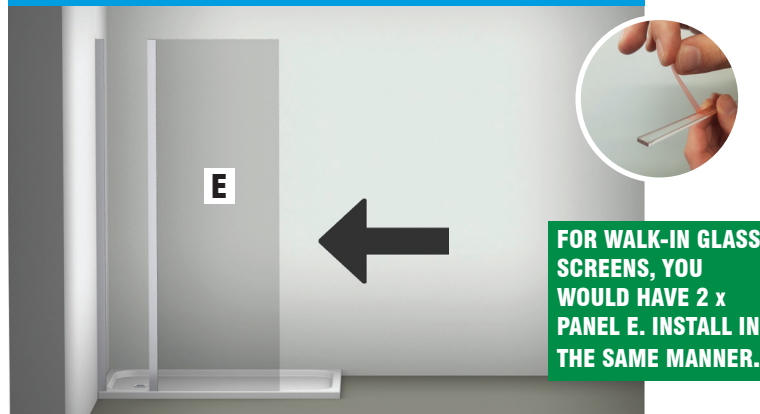
Take the wall lug from the tie bar and using suitable wall fixings (**NOT SUPPLIED**) screw securely to the wall, as shown above.

10: TIGHTEN GRUB SCREWS



Re-attach the tie bar to the glass panel and into the wall lug, now tighten the grub screws with an allen key. **Ensure** you also tighten the grub screws at the telescopic joint of the tie bar, as shown above right.

5: LOCATE PANEL "E"



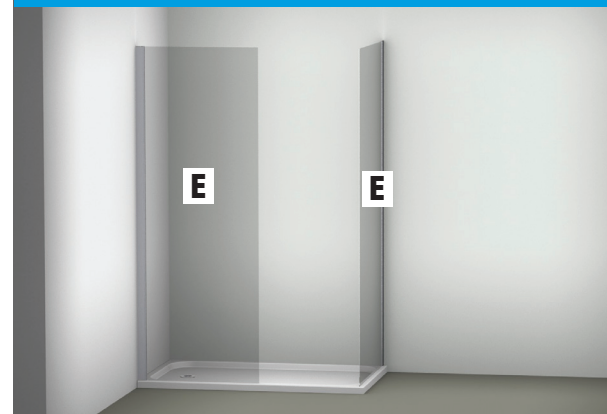
FOR WALK-IN GLASS SCREENS, YOU WOULD HAVE 2 x PANEL E. INSTALL IN THE SAME MANNER.

Slide **"PANEL E"** into the wall compensator. An optional self adhesive protective strip is supplied for applying to the bottom edge of the glass panels, see inset above. We **recommend** using this on a tiled floor setting. **DO NOT DRILL FIXING HOLES INTO COMPENSATOR INNER YET.**



DO NOT REMOVE PANEL STICKERS UNTIL SCREEN(S) ARE FULLY ASSEMBLED.

6: WALK-IN SCREENS



REPEAT STEPS 2 - 3 TO FIX THE RETURN COMPENSATOR

With the return compensator attached to the wall, slide the remaining **"PANEL E"** into the wall compensator. **DO NOT DRILL FIXING HOLES INTO COMPENSATOR INNER YET.**

FOR WALK-IN GLASS SCREENS

11: 45° STABILISER BAR



Clip the stabiliser bar onto **"PANEL E"** (on the short/return edge). Mark the fixing point onto the wall around the wall lug. Unscrew the wall lug from the stabiliser bar with an allen key and use it to mark the centre point for the wall fixing. Drill a hole with a suitable drill bit and insert suitable wall fixings. (**NOT SUPPLIED**).

FOR WALK-IN GLASS SCREENS

12: FIX STABILISER BAR



Take the wall lug from the stabiliser bar and using suitable wall fixings (**NOT SUPPLIED**) screw securely to the wall, as shown above. Re-attach the stabiliser bar to the wall lug & **"PANEL E"** as shown in Step 11.